



Technique Show

*With L'ANZA Educators Mark Dolan and Margo Terese
and Surface Educators Shawna Shelton and Josh Cloud*

Color | Cutting | Business | Styling

📍 **Lake Area Technical College**
1201 Arrow Ave NE
Watertown, SD 57201

Monday, April 13th



10:00am-3:00pm

\$49.00

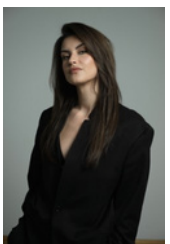
Lunch Included



Originally from Seoul and raised in the Twin Cities, Mark discovered his passion for creativity through architecture and fashion before pursuing hair design at the Aveda Institute. Since joining Evolution in 2008, he has blended artistry with connection, building a loyal and diverse clientele. As L'ANZA's Global Artist Director, Mark travels the world sharing his expertise, while earning top industry honors and Awards. Behind the chair, he's a true jack of all trades—equally inspired by blonding, cutting, and design, always driven by a love for the craft.



Shawna Shelton is a working hairstylist, multifaceted salon owner, and Surface Hair Salon Growth Manager & Wellness Business Coach. With experience leading both commission and rental teams of all sizes, she continues to work behind the chair, testing and refining the systems she teaches. For nearly 9 years, Shawna has been a certified educator for Surface Hair, teaching every business and technical class the brand offers. Her passion is helping beauty professionals take inspired action through motivational education & practical tools that create measurable growth.



Margo's love for beauty—and her eye for detail and overall aesthetic—began long before her career started in 2010. Now an international Advanced L'ANZA Artist, she travels the world sharing her expertise and passion with fellow stylists. Specializing in color & extensions, Margo is known for her dimensional color, balayage artistry, and customized extensions—alongside effortlessly chic cuts that highlight each client's natural beauty.



Stylist Suite Owner and Surface Culture Artist from Jacksonville Florida, Josh Cloud has a passion for helping stylists reach their true skill potential. With his calm energy and encouraging good vibes, every stylist that has crossed his path becomes an instant friend. Josh's keen eye & focus on cutting, he believes in working with the 'Surface Core Cutting System' that provides confidence, consistency and relatability behind the chair.